

proIMS Products Presentation Framework



proAsset system engineering Gesellschaft
für Kommunikations- und Prozeßtechnologie mbH
Burggrafenlacher Weg 14 65428 Rüsselsheim am
Main

+49 (0) 6142 8706-0

info@proasset.net

www.proasset.net



proIMS Presentation Framework

The **proIMS Web Framework** is a set of tools which can be used to display the content generated by the **proIMS Framework** as HTML Page for Web browser or as WebPart for Windows SharePoint server and Cloud applications.

The main user interface to the **proIMS** is a comprehensive dashboard, which is an easy to read, multi-page, real-time user interface, showing a [graphical presentation](#) of the current status (snapshot) or historical trends of the plants to enable instantaneous and informed decisions to be made at a glance.

Based on an equipment and asset tree on the left, visual components can be dragged and dropped to the information area of the web page and animated with data form the databases.

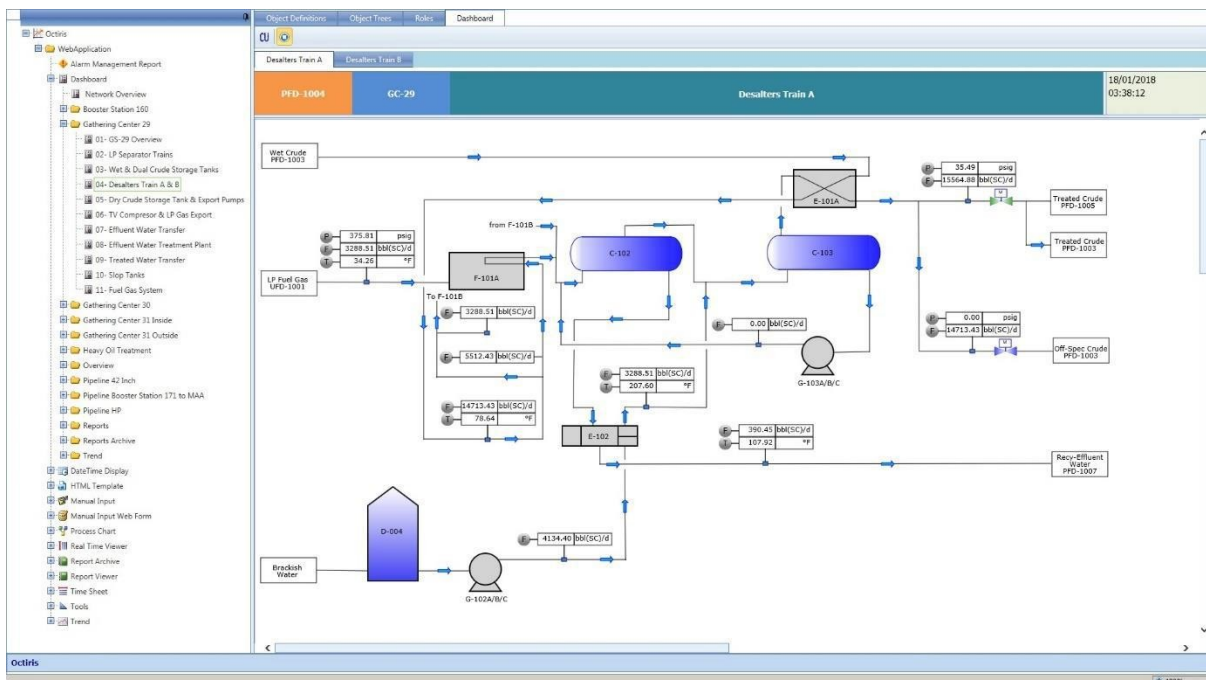
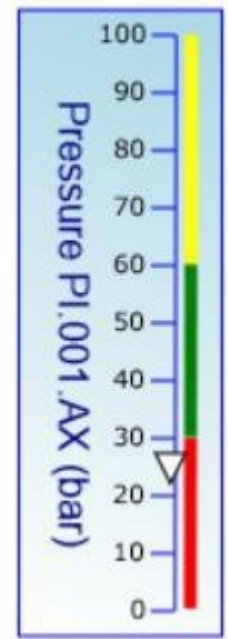


Figure 1 proIMS Dashboard

The dashboard has a set of predefined components, which are integrated to the underlying RTDB. RTDB Signals can be easily assigned to the board components and displayed.

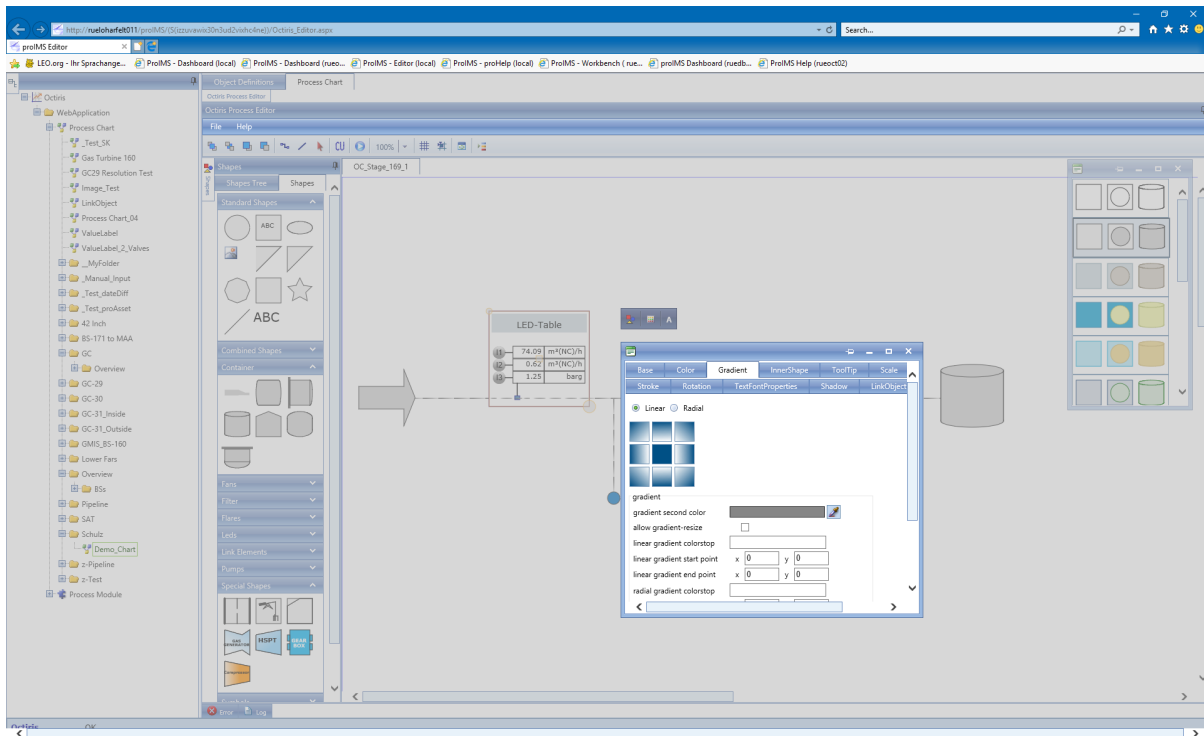
The current dashboard frame work contains the following elements:

- ✓ Trends
- ✓ Charts (Area Charts, Bar Charts, Stock Charts, Gauges)
- ✓ Process Views
- ✓ Tables to show Realtime or historical data
- ✓ Manual Input component
- ✓ Operator LOG formulars
- ✓ HTML5 Applets to display logos, headers or standard HTML content
- ✓ KPI Displays and summaries
- ✓ Integrated document manager
- ✓ Excel Export of process date



proIMS Editor

The proIMS editor is a WYSIWYG web-based tool to configure the dashboards.



Process Views, trends, manual input pages and other proIMS elements can be easily configured. Based on these elements comprehensive Dashboards can be created using drag and drop functionality.