

**proIMS**  
**Products**  
**proIMS Tools**



proAsset system engineering Gesellschaft  
für Kommunikations- und Prozeßtechnologie mbH  
Burggrafenlacher Weg 14 65428 Rüsselsheim am  
Main

+49 (0) 6142 8706-0

[info@proasset.net](mailto:info@proasset.net)

[www.proasset.net](http://www.proasset.net)



## proIMS Excel

proIMS Excel is a Microsoft Excel add-in that enables information retrieval directly into an Excel spreadsheet.

proIMS Excel provides a graphical user interface to retrieve real time or calculated data from the proIMS RTDB's and offers powerful tools for gathering, monitoring, analyzing and reporting process data. Data retrieval with the add-in can be combined with the computational and formatting capabilities of Microsoft's Excel.

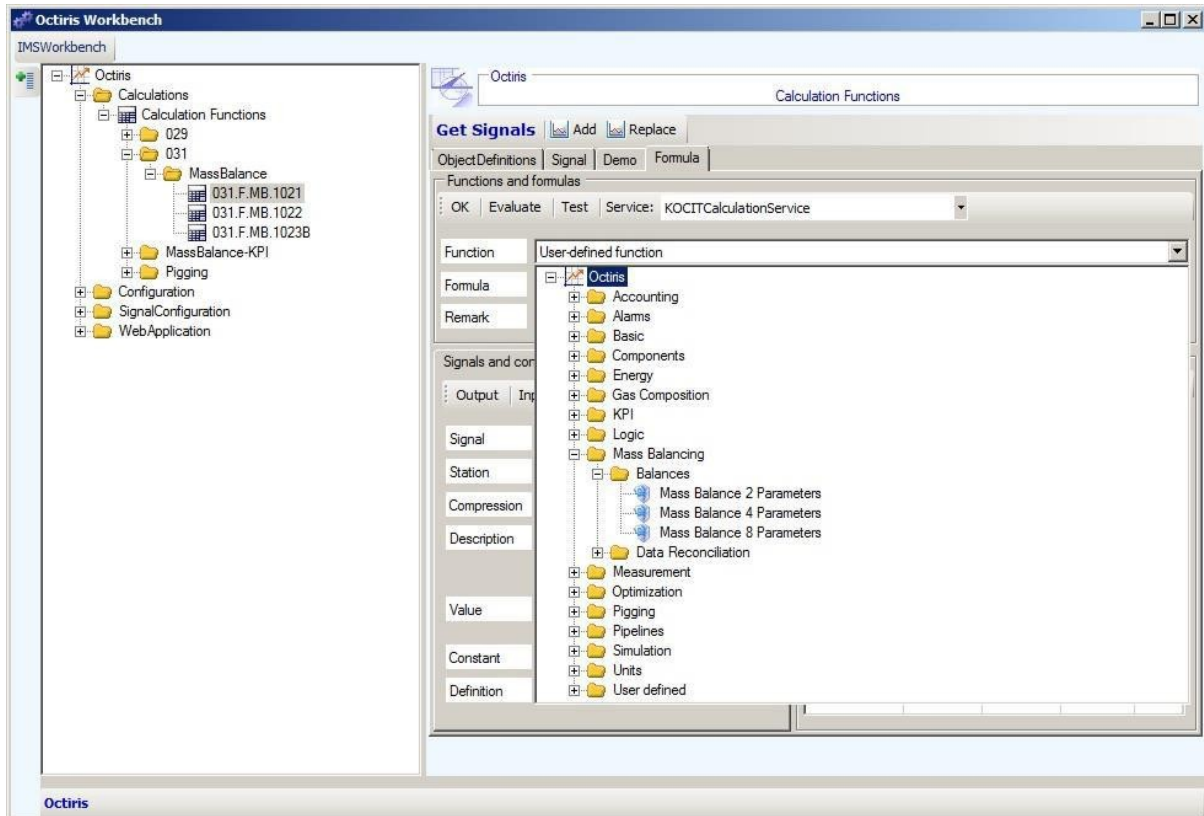
Resolution	Date	02.09.2010	Time	00:00:00
Signalname	Compression	09/02	QUALITY	
170.D.I.0300.DN	average	kg/m <sup>3</sup> (NC)	16.66	
		lb/ft <sup>3</sup> (SC)	0.98	
170.F.I.0300.D1	average	kg/h	27085.25	
		lb/h	59713.07	
170.F.I.0300.VF	average	m <sup>3</sup> (NC)/h	1626.06	
		MMSCFD	1.46	
170.P.I.0302	average	bar	1.10	
		psi	16.03	
170.T.I.7001	average	°C	37.47	
		°F	99.44	
170.D.I.7011.DN	average	kg/m <sup>3</sup> (NC)	16.66	
		lb/ft <sup>3</sup> (SC)	0.98	
170.F.I.7011.D1	average	kg/h	107356.87	Field
		lb/h	236682.62	
170.F.I.7011.VF	average	m <sup>3</sup> (NC)/h	6445.14	
		MMSCFD	5.77	
170.D.I.7012.DN	average	kg/m <sup>3</sup> (NC)	1.75	
		lb/ft <sup>3</sup> (SC)	0.10	
170.F.I.7012.D1	average	kg/h	8286.58	
		lb/h	18268.89	
170.F.I.7012.VF	average	m <sup>3</sup> (NC)/h	4733.02	
		MMSCFD	4.24	
170.P.I.006	average	bar	0.01	
		psi	0.08	

**Figure 1 IMS proIMS Excel**

proIMS Excel is also the base for the report tools. Reports defined in Excel will be automatically and periodically generated using the **proIMS Report Server**.

## proIMS Workbench

The proIMS Workbench is the central administration tool for the suite. A proIMS RTDB network consisting of several nodes can be administrated and configured from one single point using the workbench.



The configuration includes:

- ✓ node administration
- ✓ interface configuration
- ✓ administration of process parameters like units or ranges
- ✓ signal configuration
- ✓ calculation functions
- ✓ etc.

## proIMS Trend

**proIMS Trend** includes a set of trend modules for different purposes:

- ✓ Standard Trends with a wide range of configuration features
- ✓ Configurable customized Trends for special features
  - Mass Balances
  - Reconciled Values
  - Vibrations
  - Spectrum Analysis
  - Polar and Radar Charts
  - 3D Charts